



480 Hillsboro Street
Pittsboro NC

- ◇ Centrally located in Pittsboro, convenient to RTP, Chapel Hill, Durham, Apex, & Cary
- ◇ Laboratory suites over **11,800 SF** available
- ◇ Office Spaces from **1,000 SF** to **11,00 SF**
- ◇ Retail Suites from **2,000 SF** to **5,000 SF**
- ◇ All spaces within charming, revitalized textile mill
- ◇ Will be part of the larger Village at Chatham Mills

CHATHAM MILLS

Pittsboro, NC



AVAILABLE FOR LEASE

contact: Tom Roberts

919.418.2488

✉ chathamillroberts@gmail.com

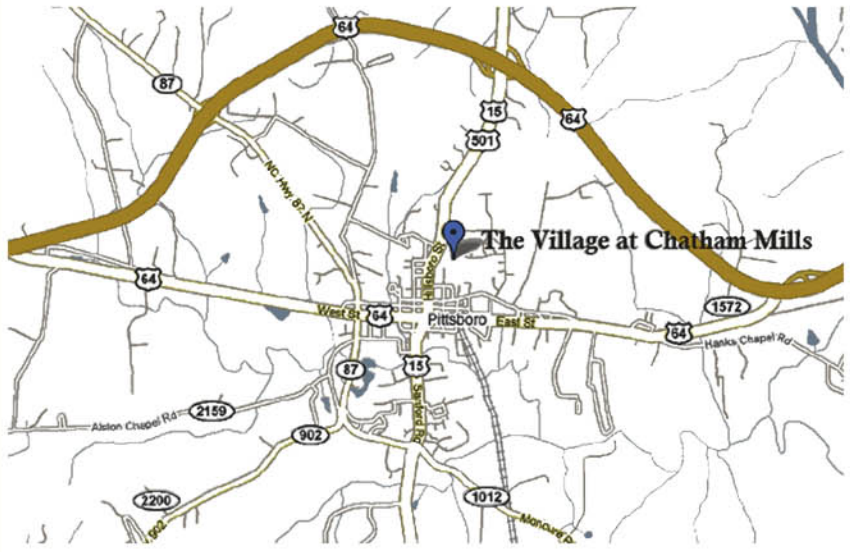
www.ChathamMills.com



480 Hillsboro Street
Pittsboro NC

- ◇ The Village at Chatham Mills sits on a 32 acre site; future mixed use development around the historic Mill
- ◇ Within walking distance to downtown Pittsboro, Chatham Forest neighborhood, and much more
- ◇ Distance to Research Triangle Park: 29 MILES
- ◇ Distance to Chapel Hill: 20 MILES
- ◇ Distance to Durham: 27 MILES
- ◇ Distance to Cary: 24MILES
- ◇ Distance to RDU Int. Airport: 24MILES

CHATHAM MILLS



PITTSBORO VICINITY 480 HILLSBORO STREET (15-501)
Pittsboro, NC 27312



REGIONAL LOCATION

AVAILABLE FOR LEASE

contact: Tom Roberts
919.418.2488

✉ chathamillroberts@gmail.com

www.ChathamMills.com



480 Hillsboro Street
Pittsboro NC

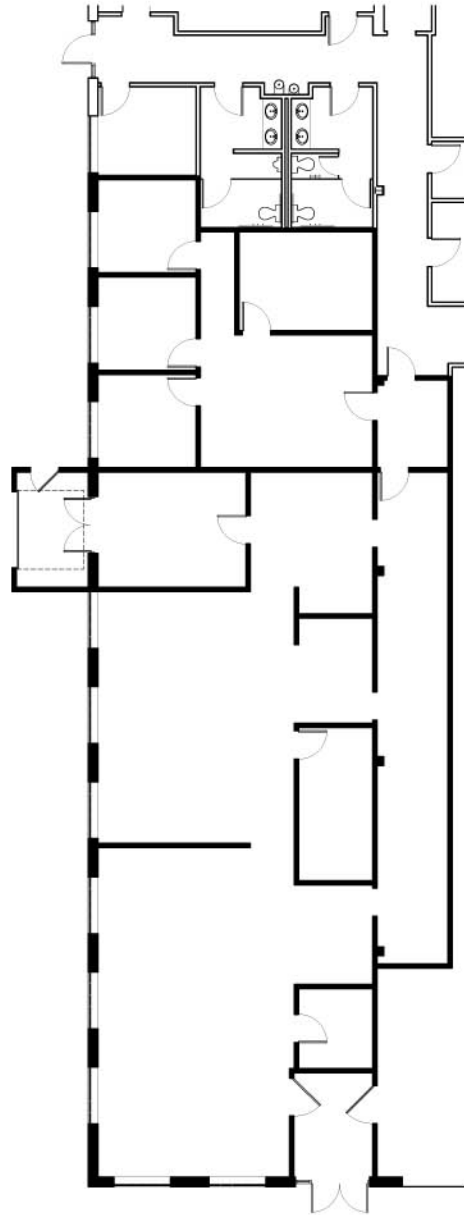
Available Spaces

- ◇ RETAIL SUITE
- ◇ RESTAURANT SUITE
- ◇ OFFICE SUITE
- ◇ EAST ANCHOR
- ◇ LOWER LEVEL
LABATORY RESEARCH
SUITE

- * 5 Year preferred leases
- * NNN leases
- * TICAM: \$2.22 per SF/Yr.
- * \$10 -\$20 per SF leases

CHATHAM MILLS

CURRENTLY AVAILABLE



AVAILABLE: + 3,325 Sq.Ft.

AVAILABLE FOR LEASE

contact: Tom Roberts
919.418.2488

✉ chathamillroberts@gmail.com

www.ChathamMills.com

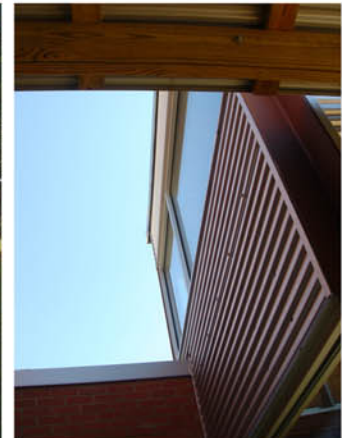


480 Hillsboro Street
Pittsboro NC

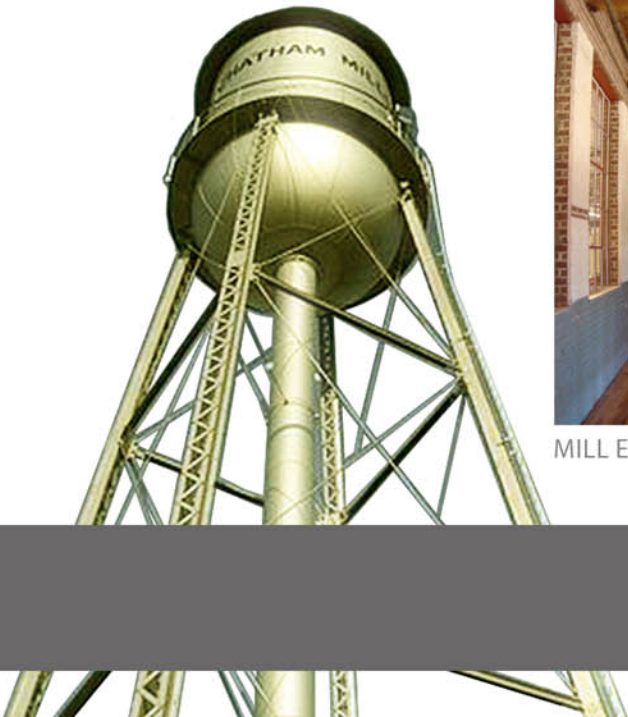
**AVAILABLE
FOR LEASE**

contact: Tom Roberts
919.418.2488

CHATHAM MILLS



MILL ELEMENTS



www.ChathamMills.com



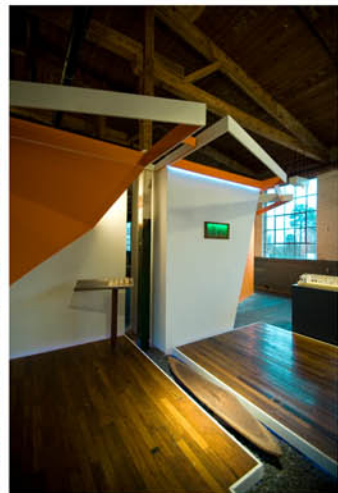
480 Hillsboro Street
Pittsboro NC

Chatham Mill
Performing Arts Center

&



CHATHAM MILLS



contact: Tom Roberts
919.418.2488

www.ChathamMills.com